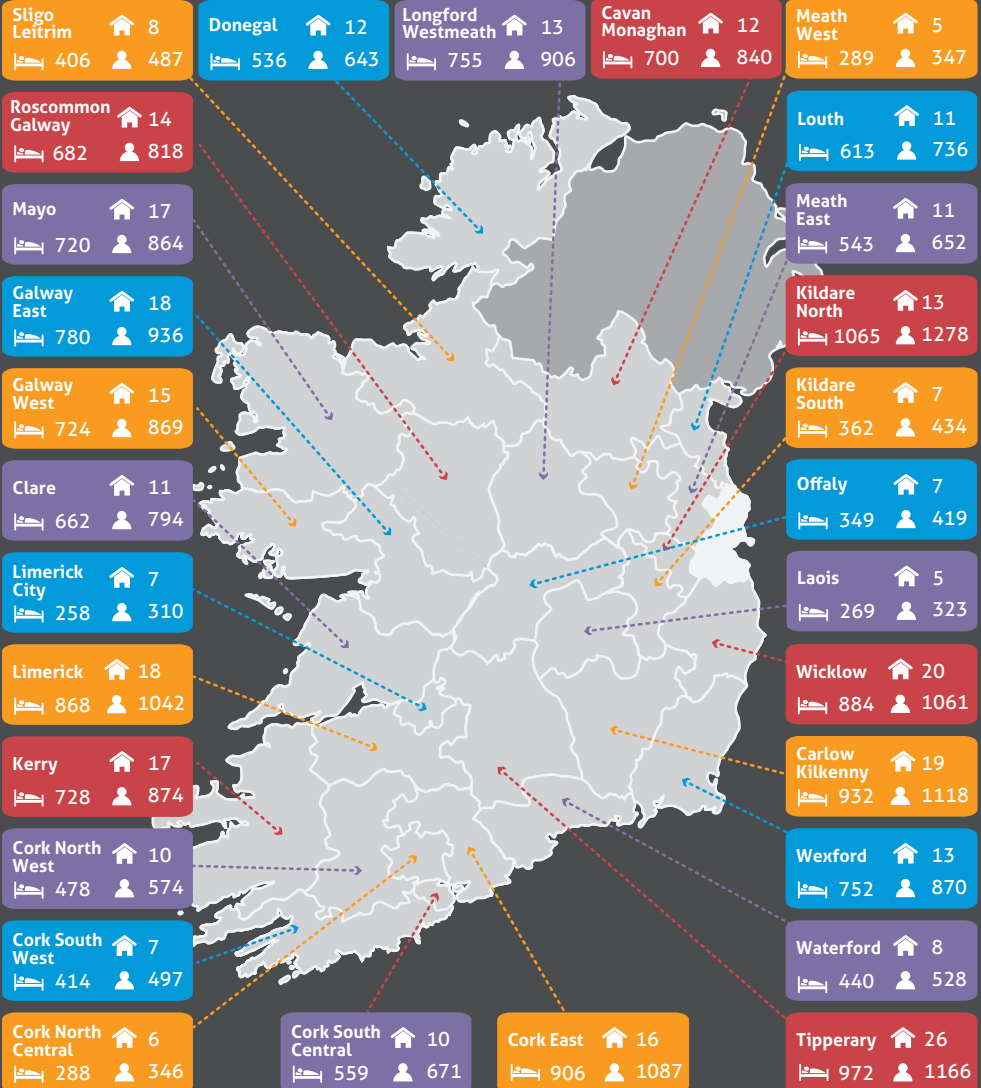
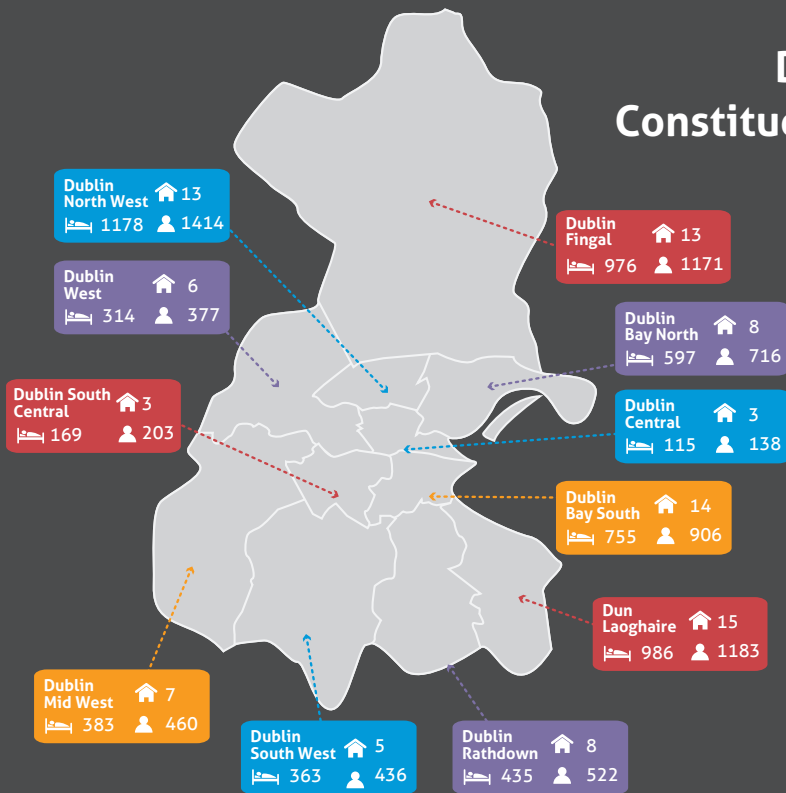


### Constituency Breakdown



Number of Nursing Homes   
 Number of Beds   
 Number Employed

# Dublin Constituencies



## Nursing Homes

- Provide 24/7 high dependency specialised care within dedicated, home-from-home, high-quality healthcare settings.
- Employ diverse teams of high-skilled specialists, including nurses and carers, to meet residents' clinical, health and social care needs.
- Provide access to 24/7 clinical care support and provide expert care to persons with dementia.
- Meet residents' day-to-day living requirements, encompassing their dietary needs, activities and therapies that promote stimulation, therapy and enhance the life of the resident.
- Provide high-quality employment to circa 30,000 people within our urban and rural communities.
- Facilitate the discharge of 9,000 people from our acute hospitals back into the community every year.
- Are essential for a proper-functioning health service.

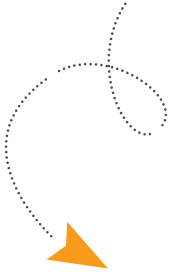
# Nursing Home Care

# 82.9 Years



Average age of a nursing home resident

**\*DEPARTMENT OF HEALTH,  
HEALTH IN IRELAND Key  
TRENDS 2016**



# 2.9

**AVERAGE LENGTH  
OF STAY** a private &  
voluntary nursing  
home of a resident  
supported by  
Fair Deal

# 22,949

Persons **FINANCIALLY  
SUPPORTED BY FAIR  
DEAL** year-end 2017

Source: HSE data



# 18,236

Number of persons  
financially supported by  
Fair Deal in **PRIVATE &  
VOLUNTARY NURSING  
HOMES** year-end 2017

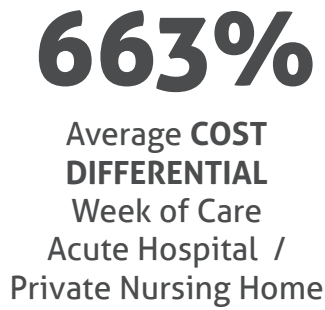
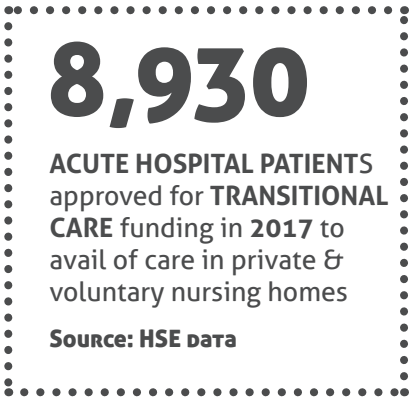
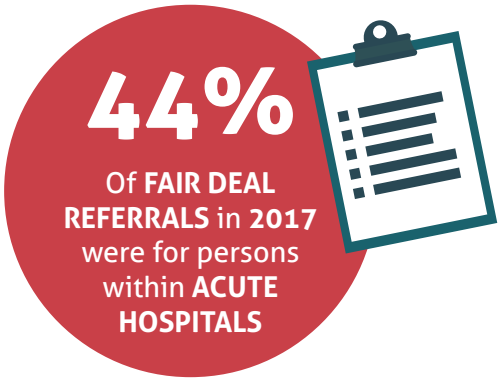
# 8,736

Hours of care per annum  
for every person availing  
of nursing home care

**\*HEALTH SERVICE  
CAPACITY REVIEW  
2018**



# Acute Hospitals & Nursing Home Care





## HSE / Private & Voluntary Nursing Homes

**60%**

**AVERAGE DIFFERENCE IN FEE PAYABLE** by HSE for provision of care in HSE nursing homes as opposed to private & voluntary

**Source: HSE Cost of Care FIGURES, FEBRUARY 2018**

**€1,523**

Average fee payable per resident per week in HSE Care

**Source: HSE Cost of Care FIGURES, FEBRUARY 2018**

**€953**

Average fee payable per resident per week in private & voluntary nursing home care

**+ 11%**

Average increase in fee payable per resident to HSE nursing homes **October 2016 – February 2017**

**+ 3.9%**

Average increase in fee payable per resident to private & voluntary nursing homes **October 2016 – February 2017**

## Our Ask

### **Immediate publication of the review of the Fair Deal pricing mechanism**

This is required to facilitate imperative discussion regarding a fit-for-purpose funding model to meet the high dependency, specialist care needs of persons requiring nursing home care. Fair Deal was introduced in 2009 and a commitment was undertaken to review the scheme after three years. The review of the scheme published in 2015 recommended a review of the pricing system be undertaken within 18 months. This was due to be completed 1st June 2017. It remains outstanding. We are operating under a scheme that has remained unchanged since it was introduced in 2009. Fair Deal fees remain arbitrary decisions based upon historic prices and geographic location.

### **A funding model that recognises the reality of costs incurred to provide nursing home care**

Nursing homes provide specialist clinical, health and social care to persons with high-dependency care needs on a 24/7 basis. The fee payable must be reflective of the reality of costs incurred, including those associated with intensive staffing, continuous professional development, regulatory compliance, capital investment, and costs incurred within 24/7 dedicated healthcare settings.

### **Introduction of an independent appeals process under the Fair Deal scheme**

Failure to agree a fee during the negotiation process with the NTPF, acting on behalf of the State, will effectively lead to the closure of the nursing home. Nursing homes must be afforded the opportunity for fair right of independent appeal.

### **Removal of the role of healthcare assistants from the Ineligible Categories of Employment for Employment Permits List on a controlled basis**

Measure is required to address the severe shortage of suitably qualified healthcare assistants. The shortage has led to closure of beds within nursing homes and if persists will lead to widespread closure and significant reduction of capacity within the sector. This would lead to a crisis across the entire health and social care sector.

**A workforce plan for the entire health service – public, private and voluntary – that places the substantial growth in requirement for gerontological care at the centre of it**

## Our Mission

**"Nursing Homes Ireland actively supports and represents our members, enabling them to provide sustainable high-quality care to their residents."**



**Nursing Homes Ireland**

2051 Castle Drive, Citywest, Dublin 24, D24 K299



(01) 4699 800



info@nhi.ie



@NursingHomesIre



www.nhi.ie